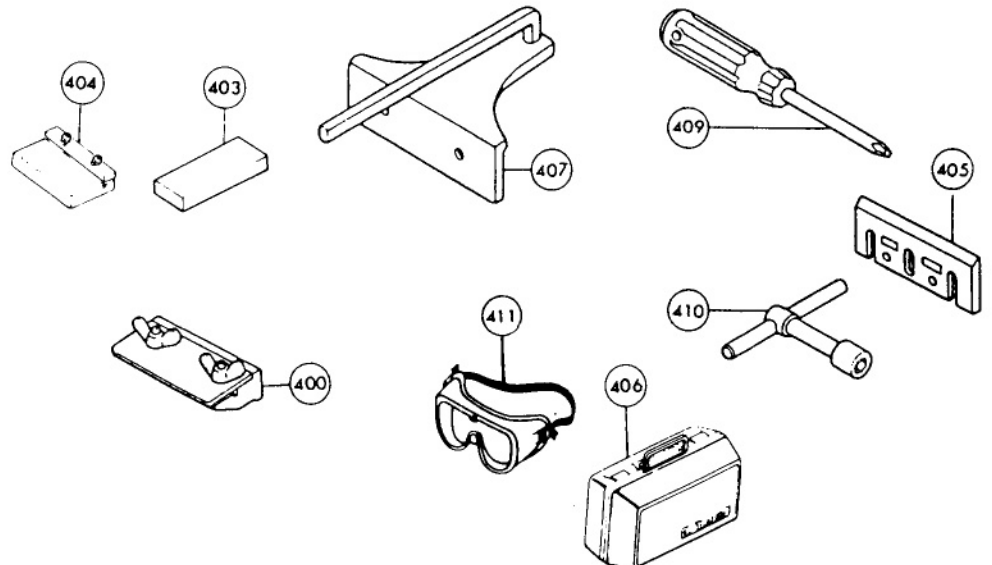
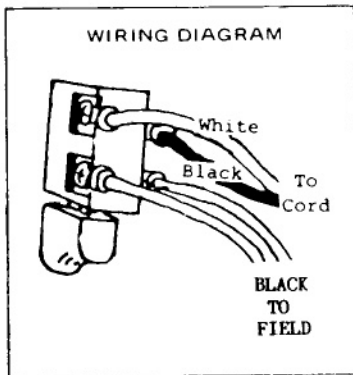
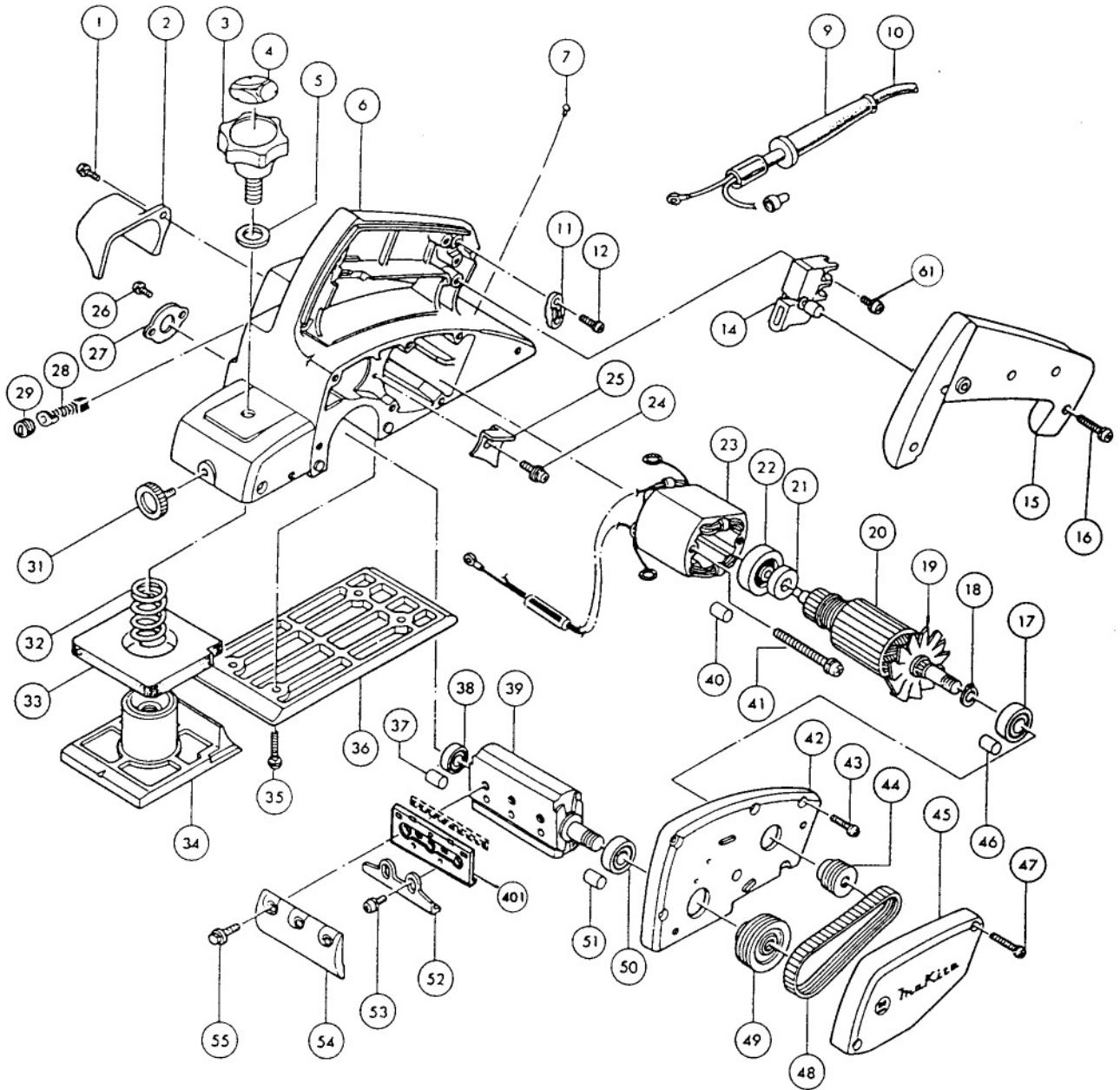




3 1/4" PLANER

Model N1900B



IMPORTANT! — To assure product **SAFETY** and **RELIABILITY**, repairs should be performed by **MAKITA** Service Centers or other qualified service organizations. Always use **MAKITA** replacement parts.

Fig.	Part No.	Qty. Used	Description	Fig.	Part No.	Qty. Used	Description
1	*	1	P. H. SCREW M4X16	36	312023-9	1	BASE
2	411650-0	1	CHIP COVER	37	*	1	RUBBER PIN 4
3	271231-0	1	KNOB 46	38	211032-4	1	B. BEARING 608ZZ
4	812137-9	1	SCALE PLATE	39	161061-6	1	DRUM
5	253796-4	1	F. WASHER 10	40	*	1	RUBBER PIN 4
6	*	1	MAIN FRAME(WITH 2EA. BRUSH HOLDER: 643556-6 & RUBBER PIN 4: 263014-2 & FIG. 37)	41	*	2	P. H. SCREW M4X55
7	953106-2	4	RIVET 0-5	42	156313-8	1	BRACKET CPL. (INCL. FIG. 46 & 51)
9	682502-4	1	CORD GUARD 8-85	43	*	6	P. H. SCREW M4X20
10	664013-1	1	CORD (2X18X8; SJT)	44	222008-6	1	V-PULLEY 4-20L
11	687063-9	1	STRAIN RELIEF	45	411019-8	1	BELT COVER
12	*	2	P. H. SCREW M4X20	46	263002-9	1	RUBBER PIN 4
14	651232-8	1	SWITCH	47	911148-2	2	P.H. SCREW M4X25
15	*	1	HANDLE COVER	48	225007-7	1	POLY V-BELT 4-241
16	*	4	P. H. SCREW M4X25	49	222009-4	1	V-PULLEY 4-37
17	211061-7	1	B. BEARING 6000LLB	50	211062-5	1	B. BEARING 6000ZZ
18	961015-1	1	STOP RING E-9	51	263002-9	1	RUBBER PIN 4
19	241510-0	1	FAN	52	342430-2	2	ADJUST PLATE
20	511936-3	1	ARMATURE ASSY. 115V (INCL. FIG. 17-22)	53	251246-3	4	P. H. SCREW M4X5
21	681614-0	1	INS. WASHER	54	345007-2	1	DRUM PLATE SET
22	211028-5	1	B. BEARING 627LB	55	251609-3	6	H. F. H. BOLT M6X17
23	593116-3	1	FIELD ASSY. 115V (INCL. 2EA. 654018-9 G. SPRING & 654501-6 CONNECTOR)	61	652008-6	4	P. H. SCREW M3.5X7
24	•	1	P.H. SCREW M4X16	ACCESSORIES			
25	411153-4	1	BAFFLE PLATE	400	123004-6	1	SHARPENING HOLDER ASSY. (W/ 2 EA. 934301-3: WING NUT M6 & 251920-3: C.S.N. BOLT M6X30)
26	*	2	P. H. SCREW M4X10	401	192157-2	1	DOUBLE EDGED BLADE SET (INCL. MINIBLADE: 793322-2, SET PLATE: 343433-9)
27	*	1	BEARING COVER 30	403	741802-2	1	DRESSING STONE
28	191947-0	1	CARBON BRUSH 76	404	123010-1	1	BLADE GAUGE (INCL. SCREW: 911228-4)
29	643550-8	2	BRUSH CAP 5-8	405	731001-4	1	PLANER BLADE SET
31	251812-6	1	SCREW M5X10	406	824174-1	1	PLASTIC TOOL CASE
32	231004-3	1	COMP. SPRING 18	407	164371-0	1	GUIDE RULE
33	421007-7	1	RUBBER PACKING	409	783002-8	1	PHILLIPS SCREWDRIVER 2
34	312566-1	1	FRONT BASE	410	782209-3	1	SOCKET WRENCH 9
35	*	4	P. H. SCREW M5X18	411	191686-2	1	SAFETY GOGGLES

* SEE SERVICE CHANGE 1

SERVICE CHANGE

1. Figs. 1, 12, 16, 24, 35, 41, 43 has been changed from Pan Head Screw to Tapping Screw.

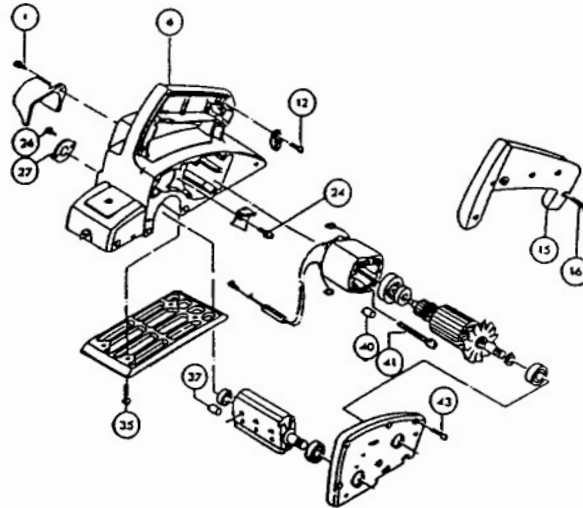


FIG.	DESCRIPTION	TYPE 1	TYPE 2
1	Screw	PART# 911128-8, M4x16	PART# 265874-8, M4x20
6	Main Frame	PART# 159335-7 (Discontinued)	PART# 159858-5
12	Screw	PART# 911138-5, M4x20	PART# 266093-9, M4x16
15	Handle Cover	PART# 411170-4	PART# 415676-4
16	Screw M4x25	PART# 911148-2	PART# 265875-6
24	Screw M4x16	PART# 911128-8	PART# 265871-4
26	P.H. Screw M4x10	PART# 911111-5	-----
27	Bearing Cover 30	PART# 285012-6 (Discontinued)	-----
35	Screw	PART# 911226-8, M5x18	PART# 265878-0, M5x16
37	Rubber Pin 4	PART# 263002-9	-----
40	Rubber Pin 4	PART# 263013-4	-----
41	Screw	PART# 251334-6, M4x55	PART# 265877-2, M4x60
43	Screw	PART# 911136-9, M4x20	PART# 265875-6, M4x25

The above parts are interchangeable as a set.